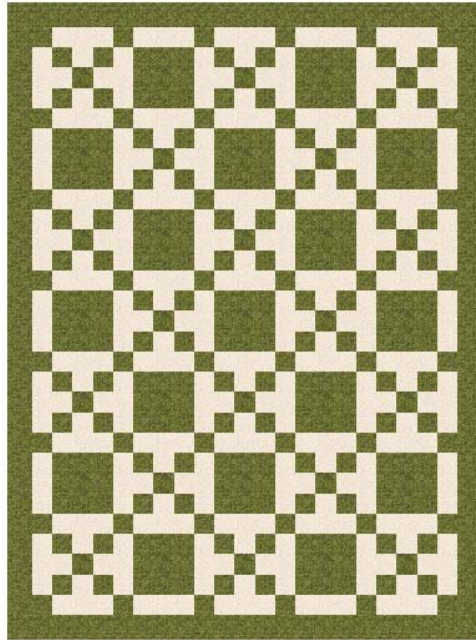



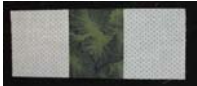






Single Irish Chain Instructions for Piecing

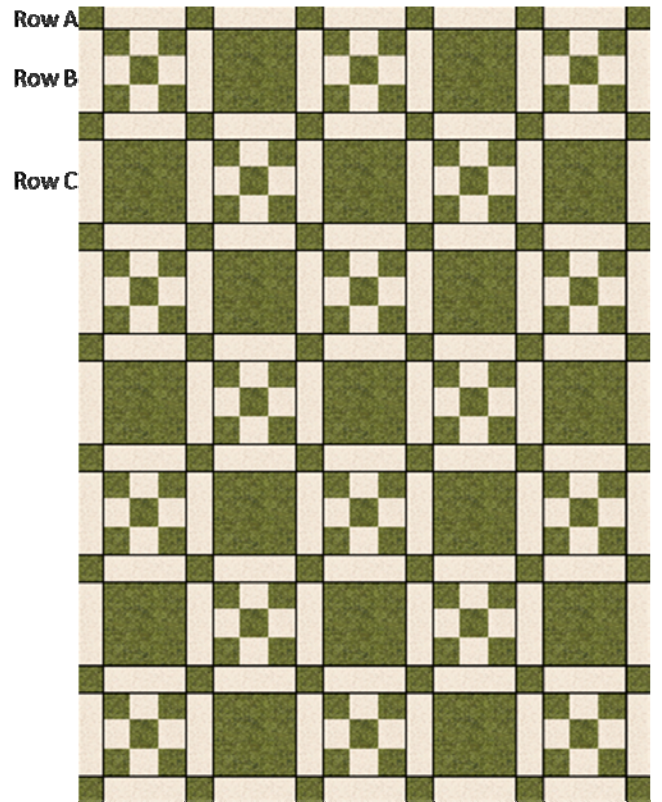


Finished size 47 x 63 inches

<p>Cutting Instructions (for Accuquilt GO): Cut 2 each width of fabric strips that are 8 inches x 40 inches (width of the fabric) of the dark and light fabrics. Fanfold these across the 2 ½ inch strip die and cut into 2 ½ x 8 inch strips.</p>	<p>Cutting Instructions using Rotary Cutter: Cut 30 pieces 2 ½ x 8 inches of dark strips. Cut 24 pieces 2 ½ x 8 inches of light strips.</p>
<p>Cut 6 each width of fabric strips that are 6 ½ inches x 40 inches (width of the fabric) of light fabric. Fanfold these across the 2 ½ inch strip die and cut into 2 ½ x 6 ½ inch strips.</p>	<p>Cut 82 sashing strips 2 ½ x 6 1/2 of light fabric.</p>
<p>Using the 6 ½ inch square die, cut 17 each 6 ½ inch squares of dark fabric (or light if you prefer).</p>	<p>Cut seventeen 6 ½ squares of dark fabric (or light if you prefer).</p>
<p>Cut a 40 inch strip across the width of fabric, then Subcut that into 8 ½ inch widths. Fanfold the length of fabric onto the 2 ½ inch strip die and cut into 2 ½ inch strips. These will be cut on the lengthwise grain. Separate the number of strips you will need for the border and binding and set them aside.</p> <p>Using the remainder of the strips, fanfold them across the strip die at a 90 degree angle and subcut into 2 ½ inch squares for the cornerstones. If you do not have enough cornerstones, cut more 2 ½ inch strips across the width of fabric and cut them using the 2 ½ inch strip die.</p>	<p>Cut 48 cornerstones 2 ½ inch squares of dark.</p> <p>Cut 220 inches of 2 ½ inch strips for border. Cut 220 inches of 2 ½ inch strips for binding.</p>

<p>Using the 2 ½ x 8 inch strips, sew one light strip with two dark strips on each side.</p> <p>Make 12 sets.</p>	
<p>Subcut into 2 ½ inch segments for a total of 36. (Accuquilt GO instructions: lay as many of the strip sets as possible across the 2 ½ inch strip die so that the seam allowances alternate and are not on top of each other, and cut into 2 ½ inch segments).</p>	
<p>Using the 2 ½ x 8 inch strips, sew one dark strip with two light strips on each side.</p> <p>Make 6 sets.</p>	
<p>Subcut into 2 ½ inch segments for a total of 18. (Accuquilt GO instructions: lay as many of the strip sets as possible across the 2 ½ inch strip die so that the seam allowances alternate and are not on top of each other, and cut into 2 ½ inch segments).</p>	
<p>Using the segments, arrange as indicated and sew together to make a nine-patch block.</p> <p>Make 18.</p>	
<p>Using cornerstones and 2 ½ x 8 inch light sashing strips make row A. Begin and end with cornerstones.</p> <p>Make 8.</p>	 <p style="text-align: center;">Row A</p>
<p>Make row B using 2 ½ x 8 inch light sashing, 9-patch block, and plain block.</p> <p>Make 4.</p>	 <p style="text-align: center;">Row B</p>
<p>Make row C using a different combination of sashing, plain block and 9-patch block.</p> <p>Make 3.</p>	 <p style="text-align: center;">Row C</p>

Sew rows together as shown.



Cut border strips approximately $2\frac{1}{2} \times 59\frac{1}{2}$ inches. Check exact length by laying the quilt out flat on a table or the floor and measure from the top center edge of the quilt to the bottom center edge of the quilt. Cut border to that measurement and sew to sides of quilt.

Cut border strips approximately $2\frac{1}{2} \times 47\frac{1}{2}$ inches. Check exact width by laying the quilt out flat on a table or on the floor and measure from the left side center edge of the quilt to the right side center edge of the quilt. Sew the borders to top and bottom edges of the quilt.

Finished size 47 x 63.



Layer with batting, quilt or tie, and bind.